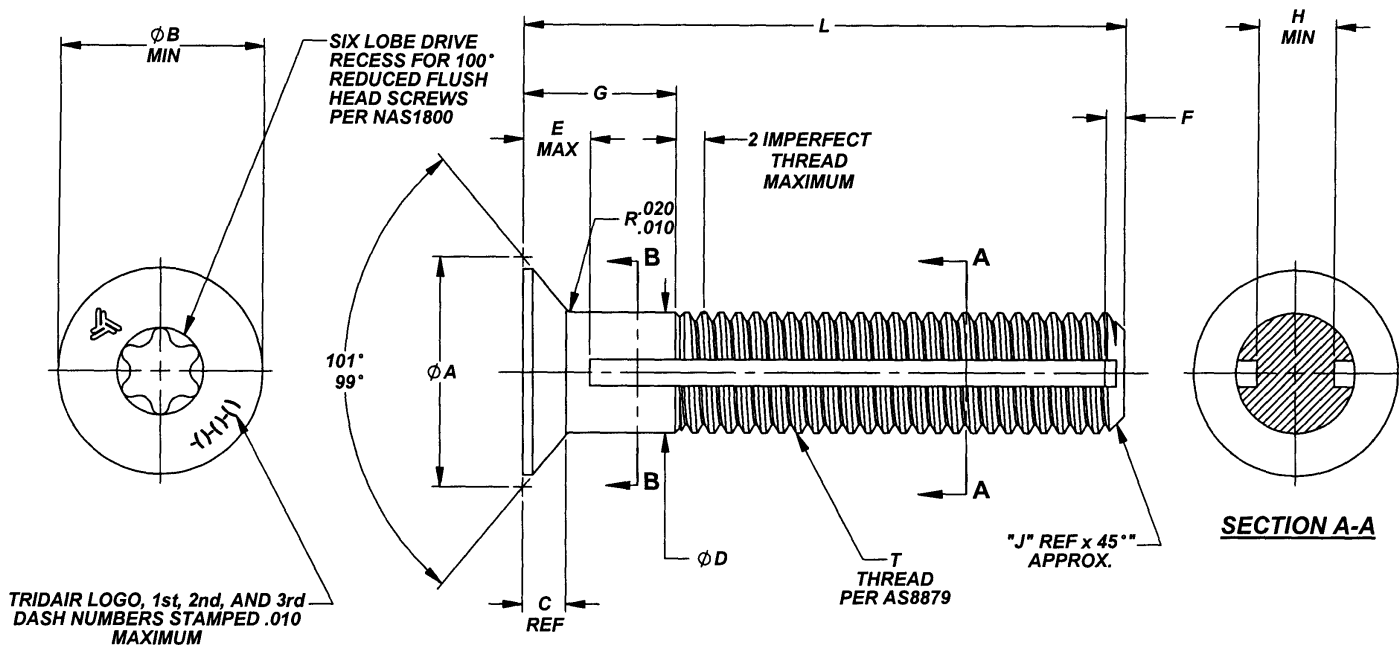


Camloc . Delron . Deutsch . Huck . K-Fast . Kaynar . Microdot . RAM . Rosan . Screwcorp . Tridair . Voi - Shan

MANUFACTURE OF THE PROPRIETARY PARTS SHOWN HERE WITHOUT WRITTEN CONSENT IS ABSOLUTELY PROHIBITED



TRIDAIR LOGO, 1st, 2nd, AND 3rd DASH NUMBERS STAMPED .010 MAXIMUM

TABLE 1

FIRST DASH NUMBER	T THREAD SIZE	φA	φB MIN	C REF	φD	E MAX	F	J REF	H MIN	RECESS NUMBER
-06	.1380-32 UNJC-3A	.279 .267	.231	.057	.1375 .1365	.100	.040	.030	.067	T10
-08	.1640-32 UNJC-3A	.332 .319	.270	.068	.1635 .1625	.100	.040	.030	.086	T20
-10	.1900-32 UNJF-3A	.357 .349	.310	.070	.1895 .1885	.100	.040	.030	.108	T20
-4	.2500-28 UNJF-3A	.480 .472	.427	.095	.2495 .2485	.140	.040	.035	.162	T20
-5	.3125-24 UNJF-3A	.568 .560	.513	.106	.3120 .3115	.165	.050	.040	.205	T30
-6	.3750-24 UNJF-3A	.698 .690	.652	.134	.3745 .3740	.195	.050	.040	.268	T30

TABLE 1 Con't

FIRST DASH NUMBER	T THREAD SIZE	RECOMMENDED SEATING TORQUE, INCH-LBS.	ULTIMATE TENSILE STRENGTH MINIMUM (CALCULATED)	ULTIMATE SINGLE SHEAR STRENGTH MINIMUM ACROSS "A-A" (CALCULATED)	ULTIMATE SINGLE SHEAR STRENGTH MINIMUM ACROSS "B-B" (CALCULATED) <12>
-06	.1380-32 UNJC-3A	12 TO 18	1,060 LBS.	750 LBS.	970 LBS.
-08	.1640-32 UNJC-3A	22 TO 33	1,650 LBS.	990 LBS.	1,400 LBS.
-10	.1900-32 UNJF-3A	37 TO 57	2,425 LBS.	1,450 LBS.	1,950 LBS.
-4	.2500-28 UNJF-3A	92 TO 140	4,625 LBS.	2,775 LBS.	3,580 LBS.
-5	.3125-24 UNJF-3A	185 TO 285	7,400 LBS.	4,425 LBS.	5,650 LBS.
-6	.3750-24 UNJF-3A	330 TO 500	11,300 LBS.	7,300 LBS.	8,310 LBS.

INTERIM DOCUMENT REVISION	
Rev.	DAF#
H1	117431
Date	
10/8/2018	

THIS DRAWING EMBODIES A CONFIDENTIAL, PROPRIETARY DESIGN & ALL DESIGN, MANUFACTURING PRODUCTION, USE & SALE RIGHTS REGARDING SAME ARE EXPRESSLY RESERVED.

APPROVED DATE 6 APR 93	CURRENT DESIGN ACTIVITY: <b>ARCONIC</b> Arconic Fastening Systems	TITLE: <b>SCREW, CAPTIVE 100° HEAD, 6 LOBES RECESS, CRES 160 KSI</b>	CURRENT DESIGN ACTIVITY: CAGE CODE: 29372
REV. LETTER AND DATE H1 MAY 12	<b>TRIDAIR PRODUCTS</b> 3000 W. LOMITA BLVD. TORRANCE, CA 90505	UNLESS OTHERWISE SPECIFIED DIMENSIONS ARE IN INCHES & ASME Y14.5M TOLERANCES:	SALES DRAWING NO. <b>CA2292-()-()-()</b>
DAF NUMBER <b>DAF 100680</b>		ANGLES = ±3° DECIMALS .XX = ±.02 .XXX = ±.010	SHEET 1 OF 3

PROJECT NUMBER: 93-120, 93-175 AND 00-041

S43235

Camloc . Delron . Deutsch . Huck . K-Fast . Kaynar . Microdot . RAM . Rosan . Screwcorp . Tridair . Voi - Shan

MANUFACTURE OF THE PROPRIETARY PARTS SHOWN HERE WITHOUT WRITTEN CONSENT IS ABSOLUTELY PROHIBITED

THIS DRAWING EMBODIES A CONFIDENTIAL, PROPRIETARY DESIGN & ALL DESIGN, MANUFACTURING PRODUCTION, USE & SALE RIGHTS REGARDING SAME ARE EXPRESSLY RESERVED.

**TABLE 2**

.1380-32 SIZE FIRST DASH NUMBER -06							L LENGTH
G = GRIP							
.125	.156	.187	.218	.250	.281	.312	
-4-7	-5-7	-6-7	-7-7	-8-7	-----	-----	.437
-4-8	-5-8	-6-8	-7-8	-8-8	-9-8	-----	.500
-4-9	-5-9	-6-9	-7-9	-8-9	-9-9	-10-9	.562
-4-10	-5-10	-6-10	-7-10	-8-10	-9-10	-10-10	.625
-4-11	-5-11	-6-11	-7-11	-8-11	-9-11	-10-11	.687
-4-12	-5-12	-6-12	-7-12	-8-12	-9-12	-10-12	.750
-4-13	-5-13	-6-13	-7-13	-8-13	-9-13	-10-13	.812
-4-14	-5-14	-6-14	-7-14	-8-14	-9-14	-10-14	.875
-4-15	-5-15	-6-15	-7-15	-8-15	-9-15	-10-15	.937
-4-16	-5-16	-6-16	-7-16	-8-16	-9-16	-10-16	1.000
-4-17	-5-17	-6-17	-7-17	-8-17	-9-17	-10-17	1.062
-4-18	-5-18	-6-18	-7-18	-8-18	-9-18	-10-18	1.125
-4-19	-5-19	-6-19	-7-19	-8-19	-9-19	-10-19	1.187
-4-20	-5-20	-6-20	-7-20	-8-20	-9-20	-10-20	1.250
-4-21	-5-21	-6-21	-7-21	-8-21	-9-21	-10-21	1.312
-4-22	-5-22	-6-22	-7-22	-8-22	-9-22	-10-22	1.375
-4-23	-5-23	-6-23	-7-23	-8-23	-9-23	-10-23	1.437
-4-24	-5-24	-6-24	-7-24	-8-24	-9-24	-10-24	1.500
-4-25	-5-25	-6-25	-7-25	-8-25	-9-25	-10-25	1.562
-4-26	-5-26	-6-26	-7-26	-8-26	-9-26	-10-26	1.625
-4-27	-5-27	-6-27	-7-27	-8-27	-9-27	-10-27	1.687
-4-28	-5-28	-6-28	-7-28	-8-28	-9-28	-10-28	1.750

**TABLE 3**

.1640-32 SIZE FIRST DASH NUMBER -08							L LENGTH
G = GRIP							
.125	.156	.187	.218	.250	.281	.312	
-4-7	-5-7	-6-7	-7-7	-8-7	-----	-----	.437
-4-8	-5-8	-6-8	-7-8	-8-8	-9-8	-----	.500
-4-9	-5-9	-6-9	-7-9	-8-9	-9-9	-10-9	.562
-4-10	-5-10	-6-10	-7-10	-8-10	-9-10	-10-10	.625
-4-11	-5-11	-6-11	-7-11	-8-11	-9-11	-10-11	.687
-4-12	-5-12	-6-12	-7-12	-8-12	-9-12	-10-12	.750
-4-13	-5-13	-6-13	-7-13	-8-13	-9-13	-10-13	.812
-4-14	-5-14	-6-14	-7-14	-8-14	-9-14	-10-14	.875
-4-15	-5-15	-6-15	-7-15	-8-15	-9-15	-10-15	.937
-4-16	-5-16	-6-16	-7-16	-8-16	-9-16	-10-16	1.000
-4-17	-5-17	-6-17	-7-17	-8-17	-9-17	-10-17	1.062
-4-18	-5-18	-6-18	-7-18	-8-18	-9-18	-10-18	1.125
-4-19	-5-19	-6-19	-7-19	-8-19	-9-19	-10-19	1.187
-4-20	-5-20	-6-20	-7-20	-8-20	-9-20	-10-20	1.250
-4-21	-5-21	-6-21	-7-21	-8-21	-9-21	-10-21	1.312
-4-22	-5-22	-6-22	-7-22	-8-22	-9-22	-10-22	1.375
-4-23	-5-23	-6-23	-7-23	-8-23	-9-23	-10-23	1.437
-4-24	-5-24	-6-24	-7-24	-8-24	-9-24	-10-24	1.500
-4-25	-5-25	-6-25	-7-25	-8-25	-9-25	-10-25	1.562
-4-26	-5-26	-6-26	-7-26	-8-26	-9-26	-10-26	1.625
-4-27	-5-27	-6-27	-7-27	-8-27	-9-27	-10-27	1.687
-4-28	-5-28	-6-28	-7-28	-8-28	-9-28	-10-28	1.750

**TABLE 4**


.1900-32 SIZE FIRST DASH NUMBER -10							L LENGTH
G = GRIP							
.125	.156	.187	.218	.250	.281	.312	
-4-7	-5-7	-6-7	-7-7	-8-7	-----	-----	.437
-4-8	-5-8	-6-8	-7-8	-8-8	-9-8	-----	.500
-4-9	-5-9	-6-9	-7-9	-8-9	-9-9	-10-9	.562
-4-10	-5-10	-6-10	-7-10	-8-10	-9-10	-10-10	.625
-4-11	-5-11	-6-11	-7-11	-8-11	-9-11	-10-11	.687
-4-12	-5-12	-6-12	-7-12	-8-12	-9-12	-10-12	.750
-4-13	-5-13	-6-13	-7-13	-8-13	-9-13	-10-13	.812
-4-14	-5-14	-6-14	-7-14	-8-14	-9-14	-10-14	.875
-4-15	-5-15	-6-15	-7-15	-8-15	-9-15	-10-15	.937
-4-16	-5-16	-6-16	-7-16	-8-16	-9-16	-10-16	1.000
-4-17	-5-17	-6-17	-7-17	-8-17	-9-17	-10-17	1.062
-4-18	-5-18	-6-18	-7-18	-8-18	-9-18	-10-18	1.125
-4-19	-5-19	-6-19	-7-19	-8-19	-9-19	-10-19	1.187
-4-20	-5-20	-6-20	-7-20	-8-20	-9-20	-10-20	1.250
-4-21	-5-21	-6-21	-7-21	-8-21	-9-21	-10-21	1.312
-4-22	-5-22	-6-22	-7-22	-8-22	-9-22	-10-22	1.375
-4-23	-5-23	-6-23	-7-23	-8-23	-9-23	-10-23	1.437
-4-24	-5-24	-6-24	-7-24	-8-24	-9-24	-10-24	1.500
-4-25	-5-25	-6-25	-7-25	-8-25	-9-25	-10-25	1.562
-4-26	-5-26	-6-26	-7-26	-8-26	-9-26	-10-26	1.625
-4-27	-5-27	-6-27	-7-27	-8-27	-9-27	-10-27	1.687
-4-28	-5-28	-6-28	-7-28	-8-28	-9-28	-10-28	1.750

**TABLE 5**

.2500-28 SIZE FIRST DASH NUMBER -4						L LENGTH
G = GRIP						
.156	.187	.218	.250	.281	.312	
-5-7	-6-7	-7-7	-8-7	-----	-----	.500
-5-8	-6-8	-7-8	-8-8	-9-8	-----	.562
-5-9	-6-9	-7-9	-8-9	-9-9	-10-9	.437
-5-10	-6-10	-7-10	-8-10	-9-10	-10-10	.625
-5-11	-6-11	-7-11	-8-11	-9-11	-10-11	.687
-5-12	-6-12	-7-12	-8-12	-9-12	-10-12	.750
-5-13	-6-13	-7-13	-8-13	-9-13	-10-13	.812
-5-14	-6-14	-7-14	-8-14	-9-14	-10-14	.875
-5-15	-6-15	-7-15	-8-15	-9-15	-10-15	.937
-5-16	-6-16	-7-16	-8-16	-9-16	-10-16	1.000
-5-17	-6-17	-7-17	-8-17	-9-17	-10-17	1.062
-5-18	-6-18	-7-18	-8-18	-9-18	-10-18	1.125
-5-19	-6-19	-7-19	-8-19	-9-19	-10-19	1.187
-5-20	-6-20	-7-20	-8-20	-9-20	-10-20	1.250
-5-21	-6-21	-7-21	-8-21	-9-21	-10-21	1.312
-5-22	-6-22	-7-22	-8-22	-9-22	-10-22	1.375
-5-23	-6-23	-7-23	-8-23	-9-23	-10-23	1.437
-5-24	-6-24	-7-24	-8-24	-9-24	-10-24	1.500
-5-25	-6-25	-7-25	-8-25	-9-25	-10-25	1.562
-5-26	-6-26	-7-26	-8-26	-9-26	-10-26	1.625
-5-27	-6-27	-7-27	-8-27	-9-27	-10-27	1.687
-5-28	-6-28	-7-28	-8-28	-9-28	-10-28	1.750

INTERIM DOCUMENT REVISION		
Rev.	Date	DAF#
H1	10/8/2018	117431

S43235

APPROVED DATE <b>6 APR 93</b>	CURRENT DESIGN ACTIVITY:  <b>ARCONIC</b> Arconic Fastening Systems	TITLE: <b>SCREW, CAPTIVE 100° HEAD,                  6 LOBES RECESS,                  CRES 160 KSI</b>	CURRENT DESIGN ACTIVITY: <b>CAGE CODE: 29372</b>
REV. LETTER AND DATE <b>H 4 MAY 12</b>	<b>TRIDAIR PRODUCTS</b> 3000 W. LOMITA BLVD. TORRANCE, CA 90505	UNLESS OTHERWISE SPECIFIED DIMENSIONS ARE IN INCHES & ASME Y14.5M TOLERANCES:	<b>SALES DRAWING NO.</b>  <b>CA2292-(-)-(-)</b>
DAF NUMBER <b>BAF100680</b>		ANGLES = ±3° DECIMALS .XX = ±.02 .XXX = ±.010	SHEET 2 OF 3

PROJECT NUMBER: 93-120, 93-175 AND 00-041

MANUFACTURE OF THE PROPRIETARY PARTS SHOWN HERE WITHOUT WRITTEN CONSENT IS ABSOLUTELY PROHIBITED

THIS DRAWING EMBODIES A CONFIDENTIAL PROPRIETARY DESIGN & ALL DESIGN, MANUFACTURING PRODUCTION, USE & SALE RIGHTS REGARDING SAME ARE EXPRESSLY RESERVED.

**TABLE 6**

.3125-24 SIZE FIRST DASH NUMBER -5					L LENGTH
G = GRIP					
.187	.218	.250	.281	.312	
- 6 - 7	- 7 - 7	-----	-----	-----	.437
- 6 - 8	- 7 - 8	- 8 - 8	- 9 - 8	-----	.500
- 6 - 9	- 7 - 9	- 8 - 9	- 9 - 9	- 10 - 9	.562
- 6 - 10	- 7 - 10	- 8 - 10	- 9 - 10	- 10 - 10	.625
- 6 - 11	- 7 - 11	- 8 - 11	- 9 - 11	- 10 - 11	.687
- 6 - 12	- 7 - 12	- 8 - 12	- 9 - 12	- 10 - 12	.750
- 6 - 13	- 7 - 13	- 8 - 13	- 9 - 13	- 10 - 13	.812
- 6 - 14	- 7 - 14	- 8 - 14	- 9 - 14	- 10 - 14	.875
- 6 - 15	- 7 - 15	- 8 - 15	- 9 - 15	- 10 - 15	.937
- 6 - 16	- 7 - 16	- 8 - 16	- 9 - 16	- 10 - 16	1.000
- 6 - 17	- 7 - 17	- 8 - 17	- 9 - 17	- 10 - 17	1.062
- 6 - 18	- 7 - 18	- 8 - 18	- 9 - 18	- 10 - 18	1.125
- 6 - 19	- 7 - 19	- 8 - 19	- 9 - 19	- 10 - 19	1.187
- 6 - 20	- 7 - 20	- 8 - 20	- 9 - 20	- 10 - 20	1.250
- 6 - 21	- 7 - 21	- 8 - 21	- 9 - 21	- 10 - 21	1.312
- 6 - 22	- 7 - 22	- 8 - 22	- 9 - 22	- 10 - 22	1.375
- 6 - 23	- 7 - 23	- 8 - 23	- 9 - 23	- 10 - 23	1.437
- 6 - 24	- 7 - 24	- 8 - 24	- 9 - 24	- 10 - 24	1.500
- 6 - 25	- 7 - 25	- 8 - 25	- 9 - 25	- 10 - 25	1.562
- 6 - 26	- 7 - 26	- 8 - 26	- 9 - 26	- 10 - 26	1.625
- 6 - 27	- 7 - 27	- 8 - 27	- 9 - 27	- 10 - 27	1.687
- 6 - 28	- 7 - 28	- 8 - 28	- 9 - 28	- 10 - 28	1.750

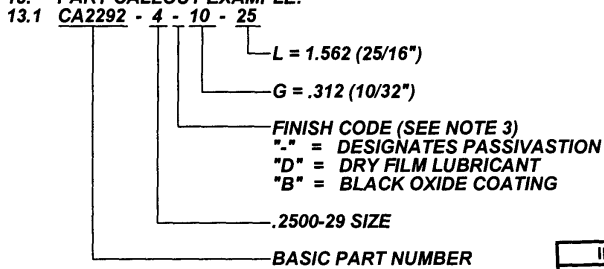
**TABLE 7**

.3750-24 SIZE FIRST DASH NUMBER -6				L LENGTH
G = GRIP				
.218	.250	.281	.312	
- 7 - 7	-----	-----	-----	.437
- 7 - 8	- 8 - 8	- 9 - 8	-----	.500
- 7 - 9	- 8 - 9	- 9 - 9	- 10 - 9	.562
- 7 - 10	- 8 - 10	- 9 - 10	- 10 - 10	.625
- 7 - 11	- 8 - 11	- 9 - 11	- 10 - 11	.687
- 7 - 12	- 8 - 12	- 9 - 12	- 10 - 12	.750
- 7 - 13	- 8 - 13	- 9 - 13	- 10 - 13	.812
- 7 - 14	- 8 - 14	- 9 - 14	- 10 - 14	.875
- 7 - 15	- 8 - 15	- 9 - 15	- 10 - 15	.937
- 7 - 16	- 8 - 16	- 9 - 16	- 10 - 16	1.000
- 7 - 17	- 8 - 17	- 9 - 17	- 10 - 17	1.062
- 7 - 18	- 8 - 18	- 9 - 18	- 10 - 18	1.125
- 7 - 19	- 8 - 19	- 9 - 19	- 10 - 19	1.187
- 7 - 20	- 8 - 20	- 9 - 20	- 10 - 20	1.250
- 7 - 21	- 8 - 21	- 9 - 21	- 10 - 21	1.312
- 7 - 22	- 8 - 22	- 9 - 22	- 10 - 22	1.375
- 7 - 23	- 8 - 23	- 9 - 23	- 10 - 23	1.437
- 7 - 24	- 8 - 24	- 9 - 24	- 10 - 24	1.500
- 7 - 25	- 8 - 25	- 9 - 25	- 10 - 25	1.562
- 7 - 26	- 8 - 26	- 9 - 26	- 10 - 26	1.625
- 7 - 27	- 8 - 27	- 9 - 27	- 10 - 27	1.687
- 7 - 28	- 8 - 28	- 9 - 28	- 10 - 28	1.750

FINISH; UNLESS OTHERWISE SPECIFIED:

1. MATERIAL:
    - 1.1 A286 CRES PER AMS5731, AMSS737.
  2. HEAT TREAT:
    - 2.1 PER AMS5737, AGE ONLY, TO ACHIEVE 160,000 PSI MINIMUM TENSILE.
  3. FINISH:
    - 3.1 STANDARD - PASSIVATED PER AMS-QQ-P-35 OR AMS2700.
    - 3.2 OPTIONAL - DRY FILM LUBRICANT PER AS5272 TYPE I.
    - 3.3 OPTIONAL - BLACK OXIDE COATING PER MIL-DTL-13924.
  4. SCREW TO BE USED WITH CA2210(-)R RETAINING RING TO CAPTIVATE TO PANEL.
  5. PANEL PREPARATION: REFER TO CAL-STD-0260 DRAWING.
  6. INSTALLATION: REFER TO CA2210T(-) DRAWING.
  7. TOLERANCE APPLY BEFORE APPLICATION OF DRY FILM LUBE OR BLACK OXIDE.
  8. MAGNETIC PERMEABILITY IS LESS THAN 2.0 (AIR = 1.0) FOR A FIELD STRENGTH OF H200 OERSTEDS, MAGNETIC PERMEABILITY INDICATOR PER ASTM A342.
  9. LONGER GRIPS (IN 1/32" INCREMENTS) AND LONGER LENGTHS (IN 1/16" INCREMENTS) THAN ARE SHOWN IN TABLES 2 THRU 7 MAY BE ORDERED.
  10. TENSILE AND SHEAR STRENGTHS ARE CALCULATED VALUES.
- <12> APPLIES TO PARTS WITH GRIP LENGTHS "G" OF 2-TIMES "D" DIAMETER AND LONGER.

13. PART CALLOUT EXAMPLE:



INTERIM DOCUMENT REVISION		
Rev.	Date	DAF#
H1	10/8/2018	117431

APPROVED DATE <b>6 APR 93</b>	CURRENT DESIGN ACTIVITY: <b>ARCONIC</b> Arconic Fastening Systems	TITLE: <b>SCREW, CAPTIVE 100° HEAD,                  6 LOBES RECESS,                  CRES 160 KSI</b>	CURRENT DESIGN ACTIVITY: <b>CAGE CODE: 29372</b>
REV. LETTER AND DATE <b>H1 1 MAY 12</b>	TRIDAIR PRODUCTS 3000 W. LOMITA BLVD. TORRANCE, CA 90505	UNLESS OTHERWISE SPECIFIED DIMENSIONS ARE IN INCHES & ASME Y14.5M TOLERANCES:	SALES DRAWING NO. <b>CA2292-()-()-()</b>
DAF NUMBER <b>DAF 100680</b>	ANGLES = ±3° DECIMALS .XX = ±.02 .XXX = ±.010	SHEET 3 OF 3	